



**Model 65620**

# MOTORCYCLE SWINGARM REAR LIFT AND STAND

## INSTRUCTIONS AND PRECAUTIONS



Distributed exclusively by Harbor Freight Tools®.

3491 Mission Oaks Blvd., Camarillo, CA 93011

Visit our website at: <http://www.harborfreight.com>



**SAVE THESE INSTRUCTIONS. READ ALL  
PRECAUTIONS AND INSTRUCTIONS.**

Copyright© 2008 by Harbor Freight Tools®. All rights reserved. No portion of this document or any artwork contained herein may be reproduced in any shape or form without the express written consent of Harbor Freight Tools. Diagrams within this document may not be drawn proportionally. Due to continuing improvements, actual product may differ slightly from the product described herein. Tools required for assembly and service may not be included.

**For technical questions or replacement parts, please call 1-800-444-3353.**

---

## **SPECIFICATIONS**

---

Weight Capacity	1000 lbs.
Width Capacity	From 10-1/4" to 13-3/8" (outside width of swing arm)
Rubber Coated Casters	3" Diameter

---

## **UNPACKING**

---

When unpacking, make sure that the item is intact and undamaged. If any parts are missing or broken, please call Harbor Freight Tools at the number shown on the cover of this document as soon as possible.

---

## **IMPORTANT SAFETY INFORMATION**

---

### **Assembly Precautions**

1. Assemble only according to these instructions. Improper assembly can create hazards.
2. Wear ANSI-approved safety goggles and heavy-duty work gloves during assembly.
3. Keep assembly area clean and well lit.
4. Keep bystanders out of the area during assembly.
5. Do not assemble when tired or when under the influence of drugs, alcohol or medication.

### **Use Precautions**

1. This product is not a toy. Do not allow children to play with or near this item.
2. Use for intended purpose(s) only.
3. Inspect before use; do not use if parts are loose or damaged.
4. Maintain product labels and nameplates. These carry important safety information. If unreadable or missing, contact Harbor Freight Tools for a replacement.

---

## **ASSEMBLY INSTRUCTIONS**

---



Read the **ENTIRE IMPORTANT SAFETY INFORMATION** section at the beginning of this document including all text under subheadings therein before set up or use of this product.

---

## **Assembly**

1. Refer to the assembly drawing for these instructions.
2. Locate two Axles (5).
3. Locate eight Flat Washers (8), four Casters (6), four Lock Nuts (4) and two Bushing (7).
4. Insert Axles (5) and into the axle brackets located on the outside curved part of the Stand Frame (1).
5. Slide a Flat Washer (8) over each end of the Axle (5) and up against the axle bracket.
6. Slide a Bushing (7) over the ends of the Axle (5) and up against the Flat Washers.
7. Slide two Casters (6) over each end of the Axle and over the Bushings (7).
8. Slide another Washer over each end of the axle and up against the side of the Caster.
9. Screw a Lock Nut (4) onto each end of the Axle locking the assembly together.
10. Repeat for the Caster assembly on the other side.
11. Slide each Paddle Style Adapter (2) into the square adapter bracket at the end of each Bracket.
  - a. To lift the front of the motorcycle, Front Fork Adapters (9) SKU 65621, are available.
12. Screw a Knob (3) into the threaded hole at the top of each square adapter bracket and tighten.
  - a. These Knobs hold the Adapters at their desired width positions.

---

## **Operation**

1. Adjust the position of the Paddle Adapters (2) to match motorcycle's dual swing arm width.
  - a. Loosen Knobs (3) holding Adapters (2).
  - b. Slide the Adapters outward.
  - c. Roll the Stand behind the motorcycle so that the motorcycle is in the middle of the Stand Frame.
  - d. Move Stand to where the Paddles are under the swing arm.
  - e. Adjust Paddle Adapters (2) inward into position.
  - f. Make sure the Paddles are snug up against the swing arm and tighten Knobs (3).

2. If the motorcycle kick stand is the type that holds the motorcycle upright, use it.
  - a. If not, have an assistant hold the motorcycle upright.
3. Lower the handle engaging the Paddle Adapters (2) with the swing arm.
4. With the Paddle Adapters securely supporting the swing arm, lower the Stand Frame (1) to the ground.



**Fig. 1**

- a. The handle resting on the ground acts as a support base for the Stand. (See Fig. 1.)

**CAUTION:** Do not attempt to lift the motorcycle if the Paddle Adapters are not fully engaged with the swing arm.

5. To lower the motorcycle, have an assistant support the motorcycle by its handlebars.
  - a. Raise the Stand Frame (1) handle from the ground carefully, lowering the motorcycle.
6. Remove the Paddle Adapters from the swing arm. Roll the Stand away from the motorcycle.
7. With the assistant still supporting the motorcycle, re-engage the kick stand.
8. To lift the front of the motorcycle, replace the Paddle Adapters with the optional Front Fork Adapters (9).
  - a. Follow the instructions that come with the Front Fork Adapters.
9. Store the Stand in a clean dry area away from children.

## **PLEASE READ THE FOLLOWING CAREFULLY**

THE MANUFACTURER AND/OR DISTRIBUTOR HAS PROVIDED THE PARTS LIST AND ASSEMBLY DIAGRAM IN THIS DOCUMENT AS A REFERENCE TOOL ONLY. NEITHER THE MANUFACTURER OR DISTRIBUTOR MAKES ANY REPRESENTATION OR WARRANTY OF ANY KIND TO THE BUYER THAT HE OR SHE IS QUALIFIED TO MAKE ANY REPAIRS TO THE PRODUCT, OR THAT HE OR SHE IS QUALIFIED TO REPLACE ANY PARTS OF THE PRODUCT. IN FACT, THE MANUFACTURER AND/OR DISTRIBUTOR EXPRESSLY STATES THAT ALL REPAIRS AND PARTS REPLACEMENTS SHOULD BE UNDERTAKEN BY CERTIFIED AND LICENSED TECHNICIANS, AND NOT BY THE BUYER. THE BUYER ASSUMES ALL RISK AND LIABILITY ARISING OUT OF HIS OR HER REPAIRS TO THE ORIGINAL PRODUCT OR REPLACEMENT PARTS THERETO, OR ARISING OUT OF HIS OR HER INSTALLATION OF REPLACEMENT PARTS THERETO.

## **PARTS LIST & ASSEMBLY DIAGRAM**

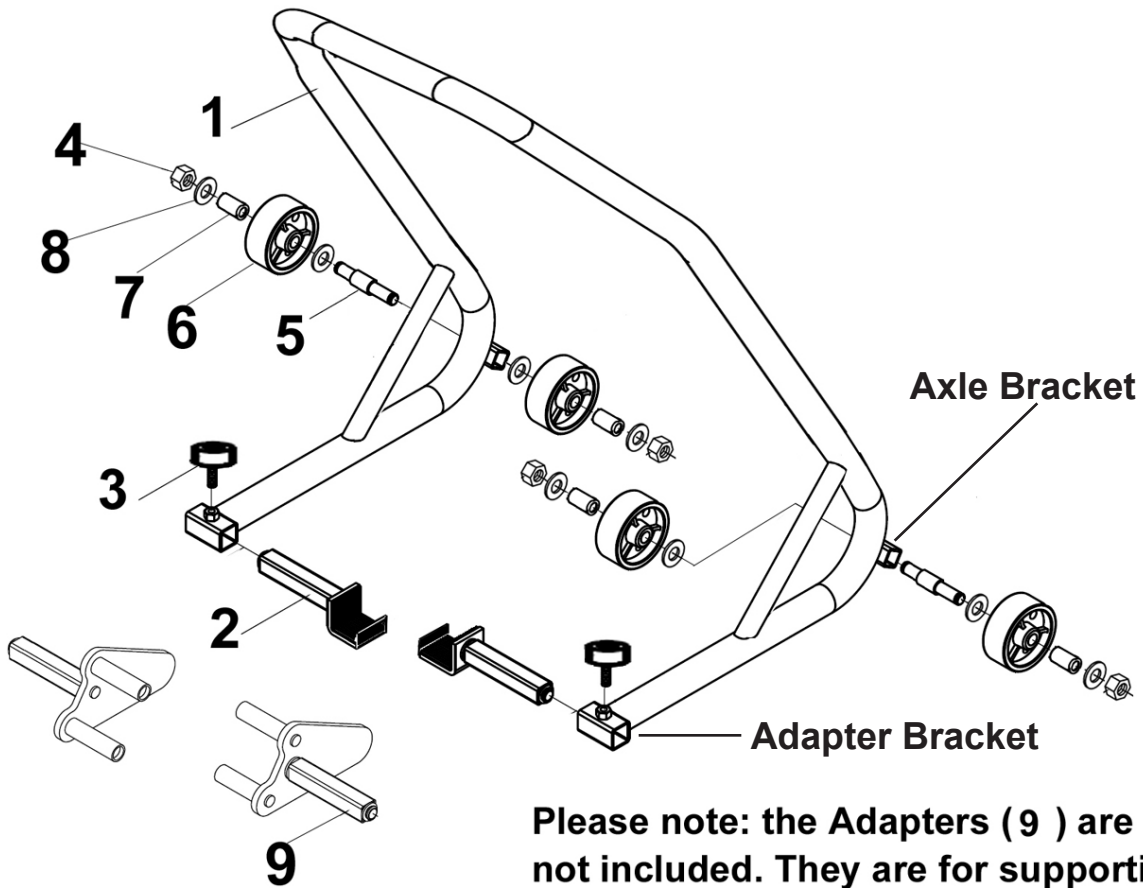
<b>Part</b>	<b>Description</b>	<b>Qty.</b>
1	Stand Frame	1
2	Paddle Adapter	1 Set
3	Knob	2
4	Lock Nut	4
5	Axle	2
6	Caster	4
7	Bushing	4
8	Flat Washer	8
9	Front Fork Adapter (Optional)*	1 Set

\* Call Customer Service for availability - Ask for SKU number 65621

---

## ASSEMBLY DIAGRAM

---



**Please note: the Adapters ( 9 ) are not included. They are for supporting motorcycle by front fork.**

---

## LIMITED 90 DAY WARRANTY

---

Harbor Freight Tools Co. makes every effort to assure that its products meet high quality and durability standards, and warrants to the original purchaser that this product is free from defects in materials and workmanship for the period of 90 days from the date of purchase. This warranty does not apply to damage due directly or indirectly, to misuse, abuse, negligence or accidents, repairs or alterations outside our facilities, criminal activity, improper installation, normal wear and tear, or to lack of maintenance. We shall in no event be liable for death, injuries to persons or property, or for incidental, contingent, special or consequential damages arising from the use of our product. Some states do not allow the exclusion or limitation of incidental or consequential damages, so the above limitation of exclusion may not apply to you. THIS WARRANTY IS EXPRESSLY IN LIEU OF ALL OTHER WARRANTIES, EXPRESS OR IMPLIED, INCLUDING THE WARRANTIES OF MERCHANTABILITY AND FITNESS.

To take advantage of this warranty, the product or part must be returned to us with transportation charges prepaid. Proof of purchase date and an explanation of the complaint must accompany the merchandise. If our inspection verifies the defect, we will either repair or replace the product at our election or we may elect to refund the purchase price if we cannot readily and quickly provide you with a replacement. We will return repaired products at our expense, but if we determine there is no defect, or that the defect resulted from causes not within the scope of our warranty, then you must bear the cost of returning the product.

This warranty gives you specific legal rights and you may also have other rights which vary from state to state.

**3491 Mission Oaks Blvd. • PO Box 6009 • Camarillo, CA 93011 • (800) 444-3353**

**Record Serial Number Here:** \_\_\_\_\_

**Note:** If product has no serial number, record month and year of purchase instead.

**Note:** Some parts are listed and shown for illustration purposes only, and are not available individually as replacement parts.